

All rights reserved.

The owner of this CD may download it directly to their computer, and may print one copy of this PDF.

Copies of the body printouts may be generated for personal use. Any further copying without written permission is unlawful.

This is my livelihood. Income from this book and similar projects encourages me to create additional resources for our community.

This is dedicated to my students, the members of the Association and Design Professionals, and everyone who has sought for the creative spirit in themselves.

Special thanks to Robin Bolton, MaryAnn Clavin, Marcia Cohen, Rae Cumbie, Kitty Daly, Russell Etmer, Frank Fraser, Dawn Jardine, Teresa Kipper, Pamela Leggett, Erin Retelle, Linda Stewart, Mechiel Whitmore, and Stephen Wisner.

Supplemental information is on my website. You may email me from there.

www.carolkimball.net

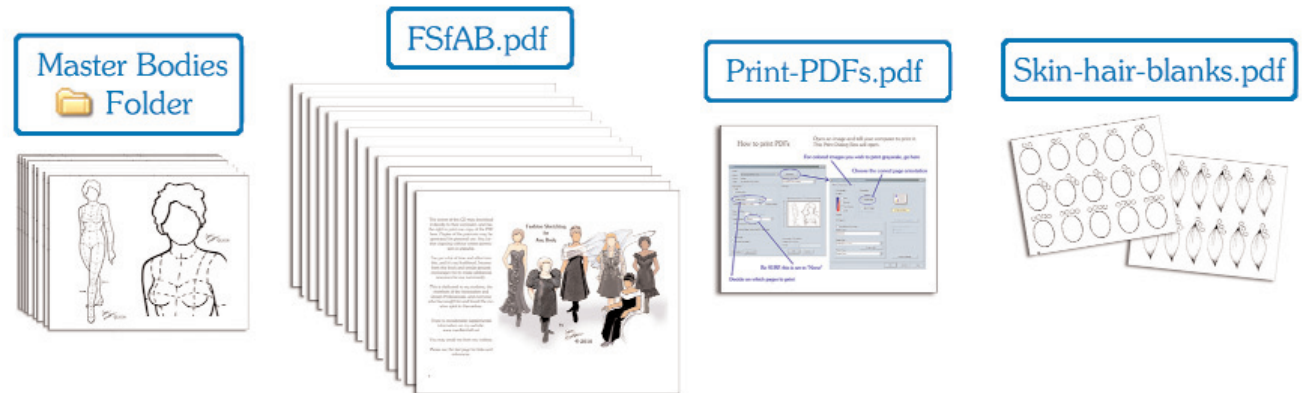
Fashion Sketching for Any Body



Table of Contents

Page		Page	
3	Introduction What will this course teach me?	32	Satin, leather, fur, feathers, sparkles
4	Why use realistic bodies ? Tools and supplies	33	Color: skin tones
5	How to get started	34	Color: hair
6	Bad drawings	35	Color: heads
7	Common mistakes	36	Translucent and transparent fabrics, lace
8	Heads, hair styles	37	Combining colors
9	Lycra bodysuit	38	Light and shadow
10	Light, medium weight sweaters	39	Using texture sheets
11	Thick sweater Turtleneck collar - ribbing Adding patterns	40-48	Examples combining all elements
12-13	Necklines	49-50	Students' drawings
14-15	Collars		
16	Shirt collar, open		
17	Jackets		
18	Soft blouse, crisp shirt		
19	Design Details: Button/buttonhole, jabot, bows, elastic waistbands, ruffles		
20	Skirts		
21	Knife-edge pleats		
22	Box pleats, kick pleat		
23	Tiered skirt: stiff fabric		
24	Tiered skirt: soft fabric		
25-26	Pants		
27	Adding details (shorts)		
28	Patterns - vertical & horizontal stripes		
29	Diagonal stripes, from square		
30	Diamonds, fishnet hose		
31	Patterns from diamonds		

What's on this CD?



Master Bodies (folder) - Hourglass, and Shorter and Fuller versions, 4 graphics each, in black line drawings and gray (24 in all)

FSfAB.pdf - Fashion Sketching for Any Body (you're looking at it)

Print-PDFs.pdf - instructions

Skin-hair-blanks.pdf - additional worksheets

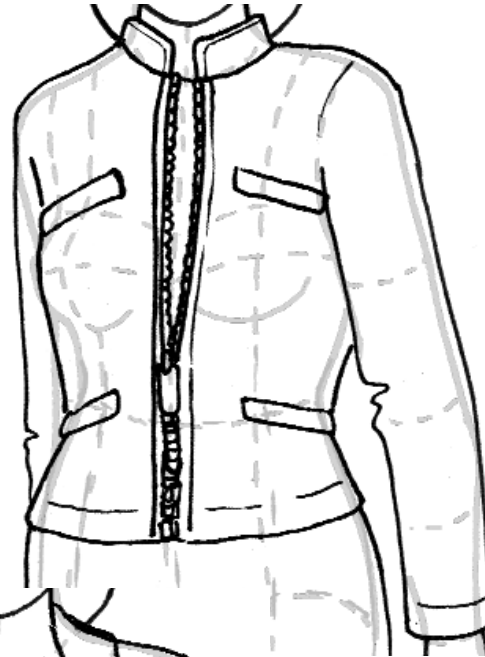
Jackets

Jacket and coat collars evolved from convertible collars and sometimes can be worn lapped and buttoned shut.

Where the jacket fronts lap is important to the look on the body. Try higher and lower versions. This is easy on paper.



Shawl collar. This often is cut as one with the fronts and has a center back seam.



Double-breasted.





Plaids match at the upper chest. This jacket is paired with a plain skirt, using the same texture sheets.



Gold was added to the suit as the last step. The clothing tones were worked into the hair, and vice versa.



A “white” blouse needs subtle shading: pale blue-gray for a winter white, cream or dull yellow for an off-white.

Here, both were used.