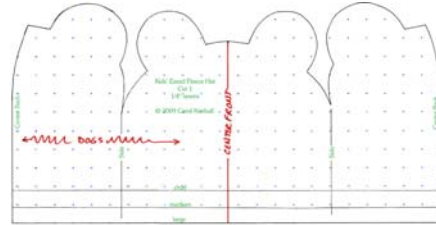


# Eared Fleece Hat

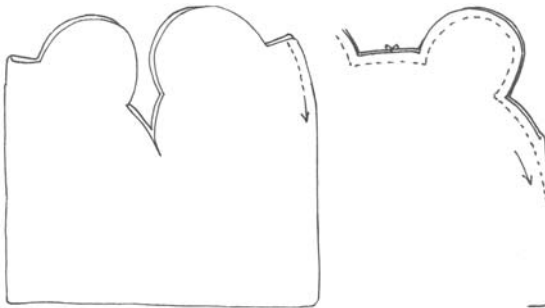
December 2009



There is one pattern piece. Print out the three pages\* and slide until the lines match. There is no piece for the bottom left-hand corner. Just square it over from the ones you have.

**\*IMPORTANT!** When the dialog box to print opens, in the third box on the left (Page Handling) you **MUST** set Page Scaling to “None” or the patterns will be too small!

1. Lay out pattern with greatest stretch running the long way. DOGS is the Degree of Greatest Stretch, usually crossgrain. Cut.



2. Fold right sides together and sew center back seam.

Refold so that the center back and center front are on top of each other. Starting at the top of the higher ear, align the center of the hat, and sew around. **DO NOT STRETCH** to fit – the seams will go together 1:1. Taper the dart off the edge. Flip the hat over and finish the top seam (not shown).



3. Clip the corners of the ears to the stitching line.
4. Turn the hat right side out.
5. Topstitch the ears 1/4” – 3/8” from the

- curved edge. The seam will roll slightly to the front.
6. Sew in a label, if you’re using it.
  7. Turn up 1” for the band and topstitch (not shown).