

## Coat Construction

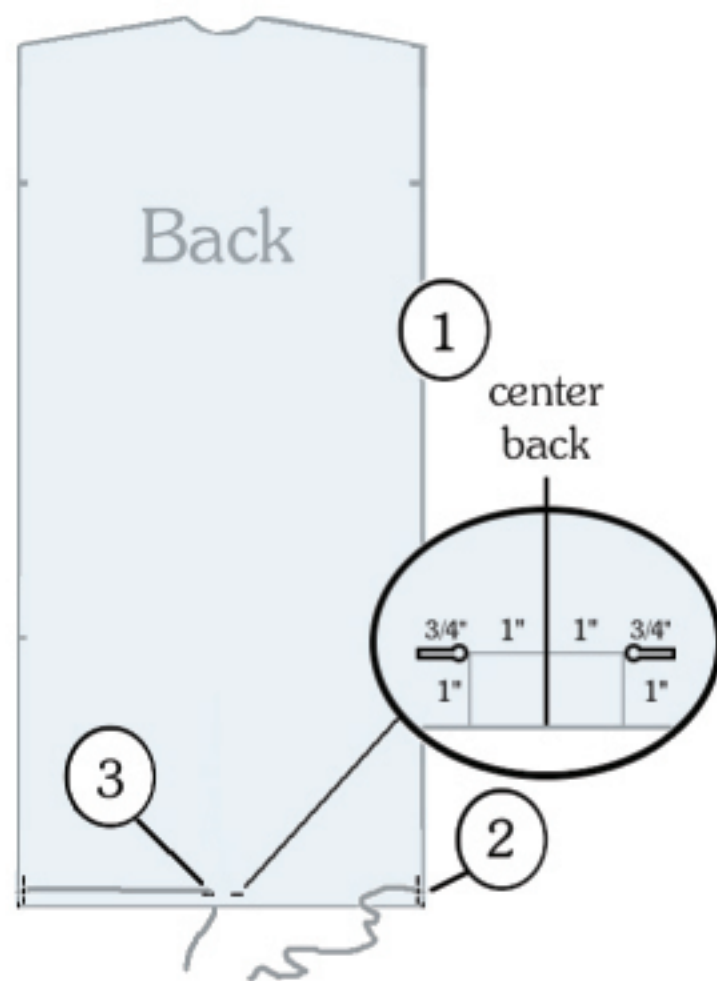
This oversized coat to layer over other outer garments fits many. It's designed for quick and easy construction. Edges are left raw, so choose fleece or cut up a tarp to prevent raveling. Permission is given to duplicate the pattern and instructions as long as the attribution to Kimball & Phillips, LLC., is kept, and as long as no profit is made selling the patterns or coats. I copied (with her permission) the concept of the pockets for newspaper insulation from an award winning coat by Ruth Ciemnoczolowski, featured in Threads magazine, issue #154.

There are separate PDFs for drafting (and altering) the pattern, and to print the hood if you'd rather cut and paste it than work it up.

Suggested seam allowances are  $\frac{3}{8}$ ", though  $\frac{5}{8}$ " will work.

4 1/2 yards 60" fleece (see drafting instructions for other layouts) or an 8'x10' tarp, fleece throw, or felted blanket (non-raveling).

3 pieces of cord or twill tape 24" long, 4 pieces 12" long, a 4" piece for CB loop



### Back:

1. Create two openings  $\frac{3}{4}$ " long, 1" to each side of the center back, 1" from the bottom edge.

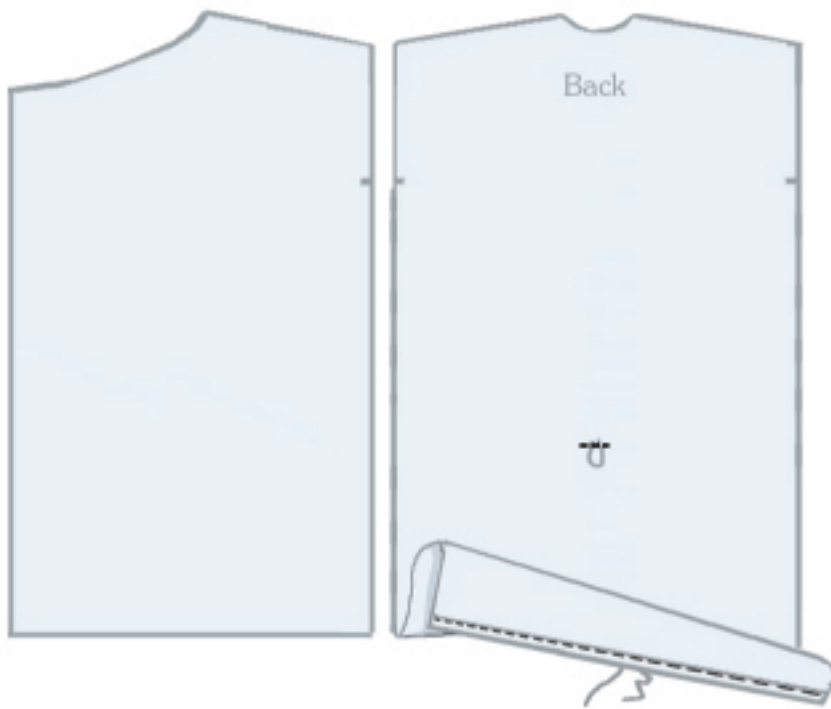
These can be buttonholes, eyelets (but remember the body may lean or lie against them, so keep them small and flat) or slits in the fabric reinforced by a box of stitching. You will also need these in the hood, so skip ahead for placement and do those now, too.

2. Cut two lengths of cord or tape 24" long and sew them to the sides 1" up from the bottom.

3. Feed each through its closest opening.

4. Fold up the bottom at 1" and stitch across, holding the cords taut so they're not caught in the stitching.





### Center Back Loop

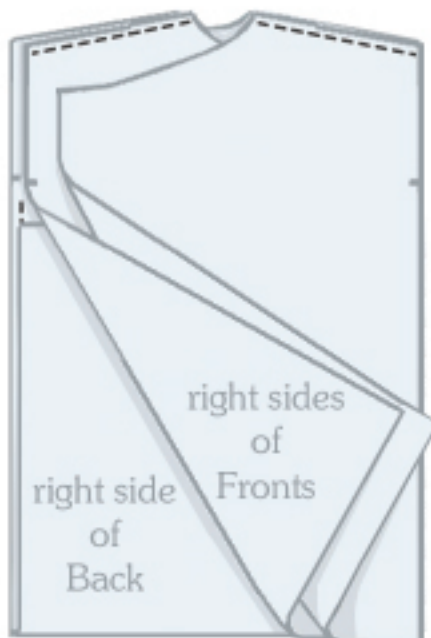
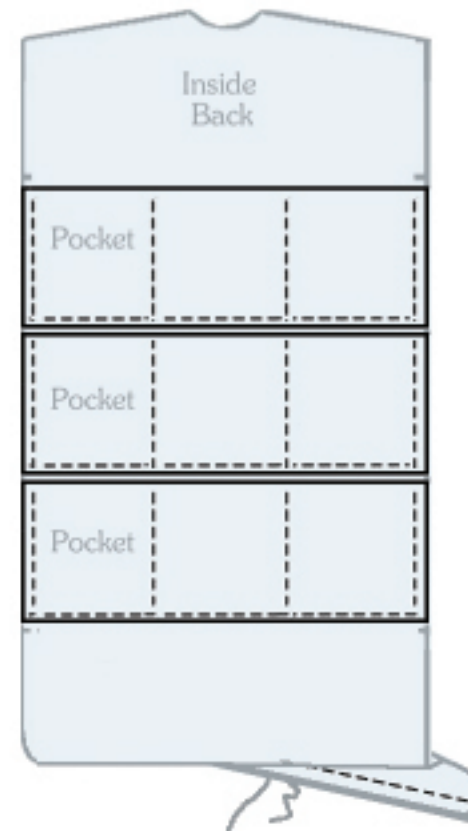
The longer back folds up to the same length as the fronts – this isn't marked as the length may have been changed. Sew a short loop to the outside of the center back to keep the bag from sagging when not folded to the front to cover the feet.

### Pockets to Back

The pockets are sewn across the width of the inside back, starting below the notches for the sleeves.

Sew across their sides and bottoms.

Then sew through all layers parallel to the side seams, making pockets about 12" square.



### Shoulder Seams

Flip the back right side up. Lay the two fronts, right sides down, on it, matching the shoulder seams (which front is on top doesn't matter). Stitch the shoulder seams. Then lift up the fronts and fold the back up so that the bottom edges are even, as shown.

## Sleeves

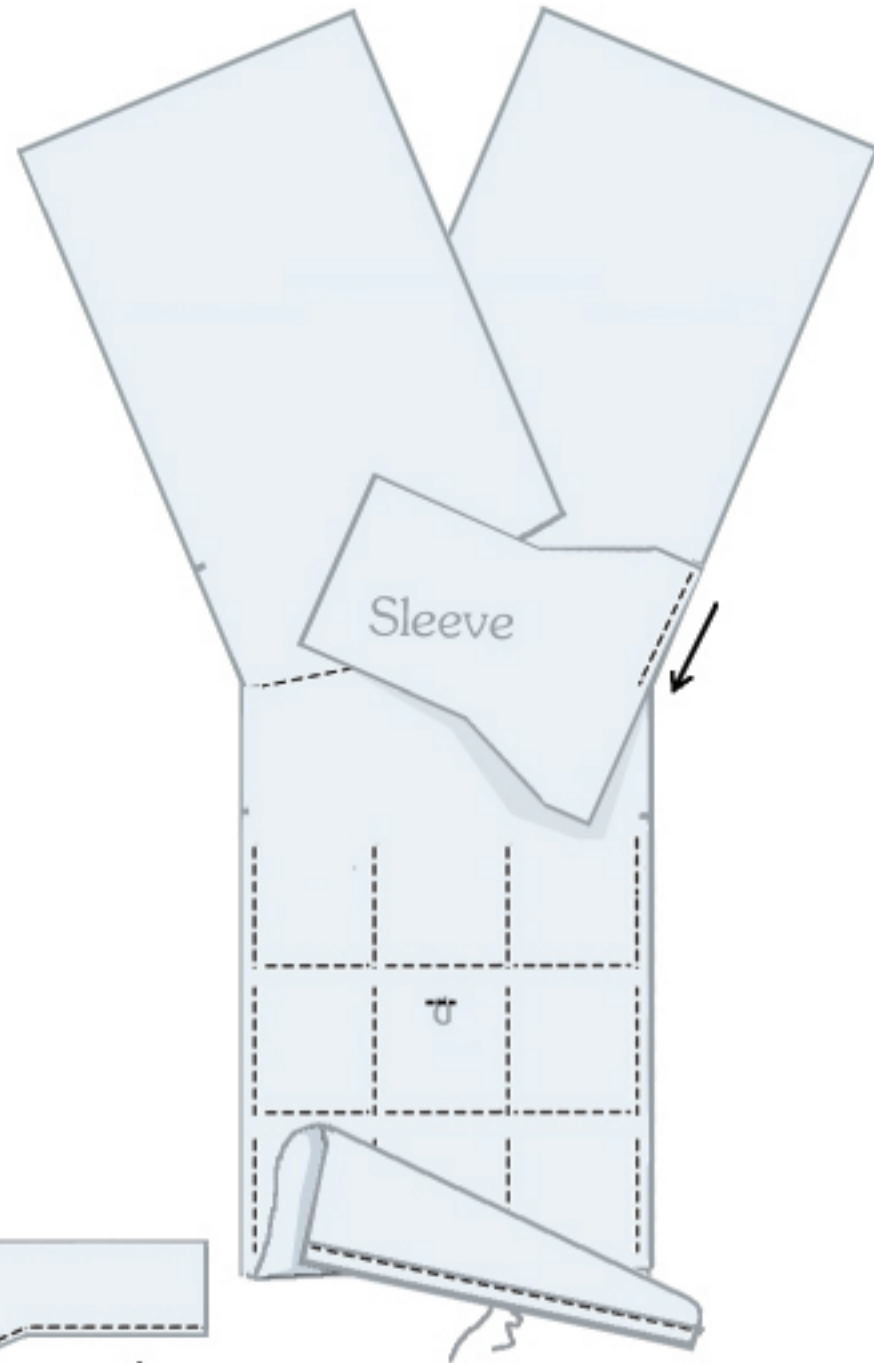
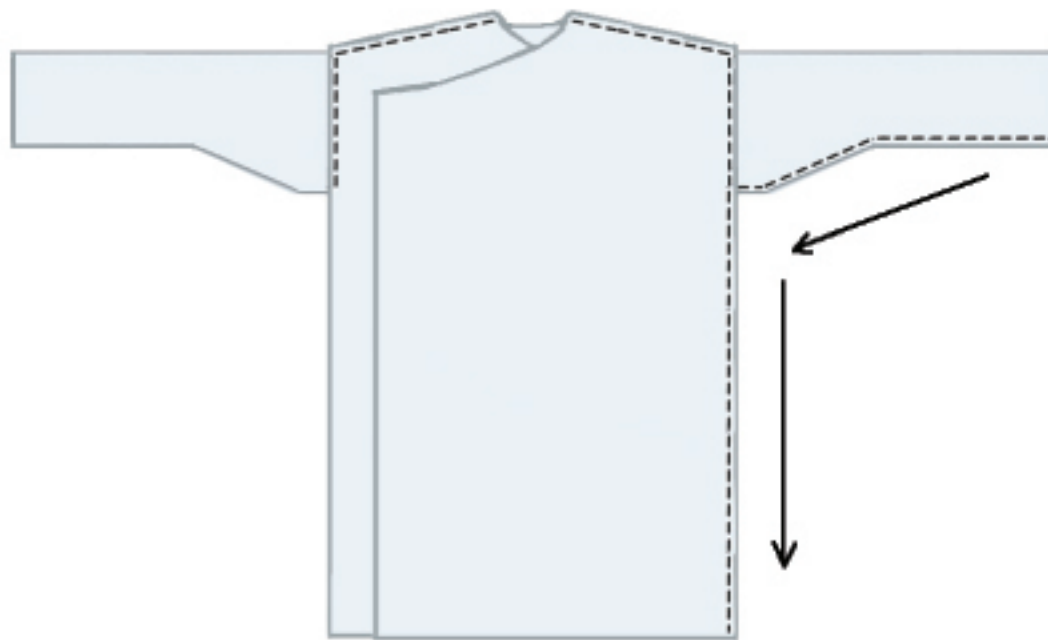
Open the coat right side up as shown at left. Lay a sleeve, right side down, on one front with its edge to notch and stitch to shoulder seam. Pivot the sleeve so it aligns with the back and sew its other half.

Repeat with the other sleeve.

## Underarm and Side Seams

Fold the coat with its right sides together.

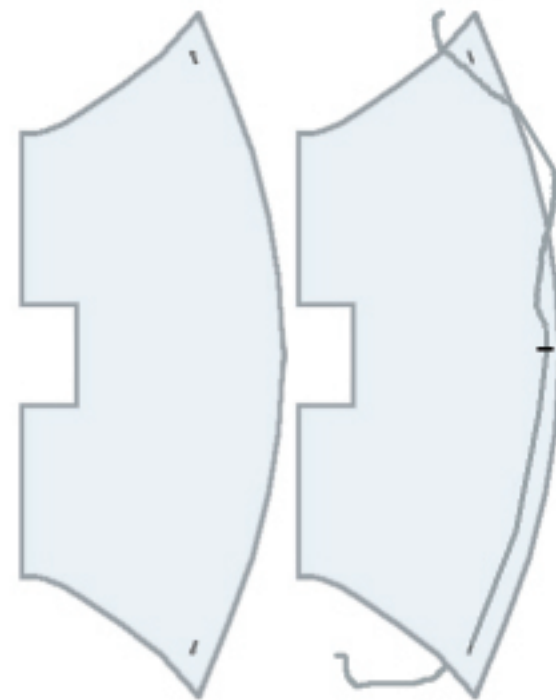
Stitch the underarm seam on one side, pivot at the side seam, and sew to the bottom. Repeat for the other side.

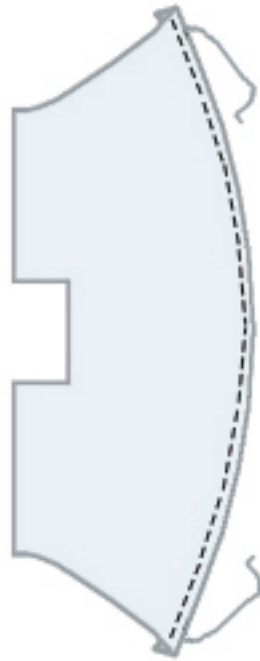


## Hood

Make  $\frac{3}{4}$ " buttonholes, eyelets or slits 1" from at each end of the hood.

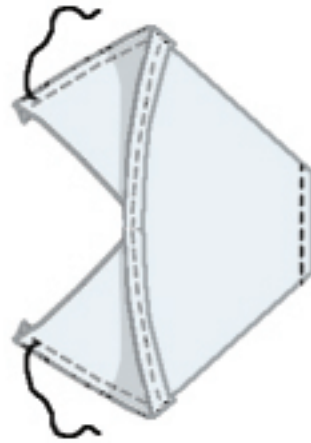
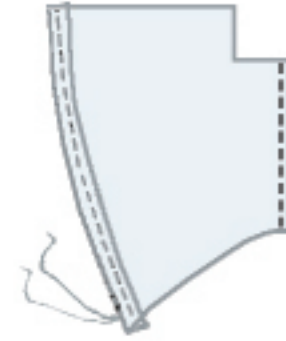
On the wrong side of the hood, sew the middle of a 24" cord to the center of the curve. Feed the cords through the holes.





Fold over a 1" allowance and topstitch, being careful not to catch the cord.

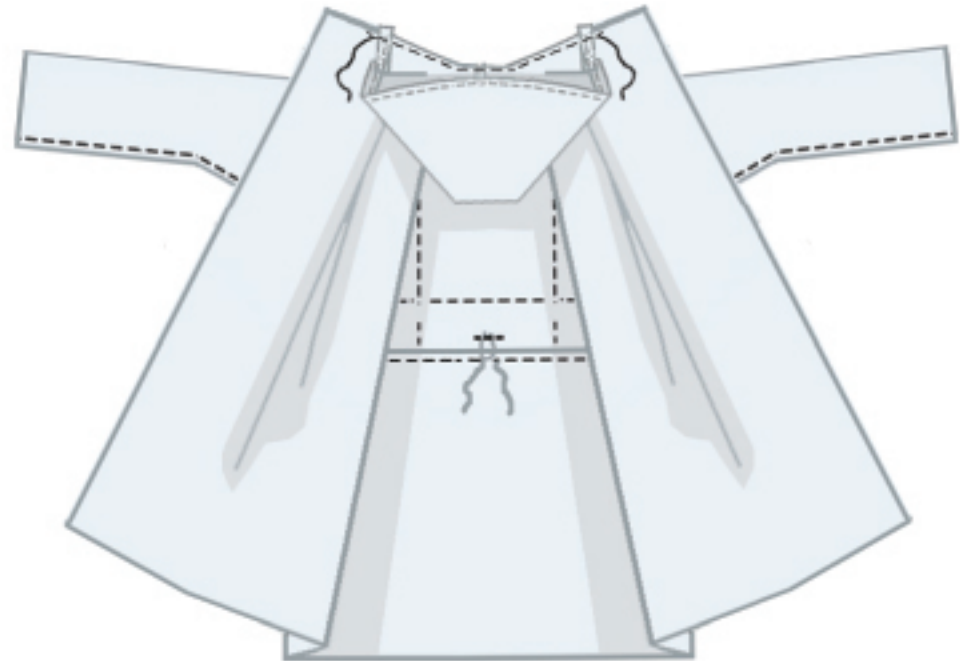
Fold the hood in half, right sides together, and sew the center back seam.



Open out, fold the other way so that the square cutout at the upper back becomes a straight line, and stitch across this end. Turn the hood right side out.

### Hood to coat

(coat is still inside out)  
Fold the back neckline to find the center. Match the right side of the center back seam of the hood to the right side of the center back of the coat. Track the neck edge up along the front and sew the hood to the coat. Don't catch the ties.



### Front ties

Turn the coat right side out. Sew a 12" tie to each upper front corner. Lap the front left over right for a man's coat, right over left for a woman's, and sew matching ties to the coat fronts.

The generous sleeves fold into deep cuffs. If turned to the inside, they make pockets for the hands. The back section can be flipped up over the fronts to make a bag to keep the legs warm.

