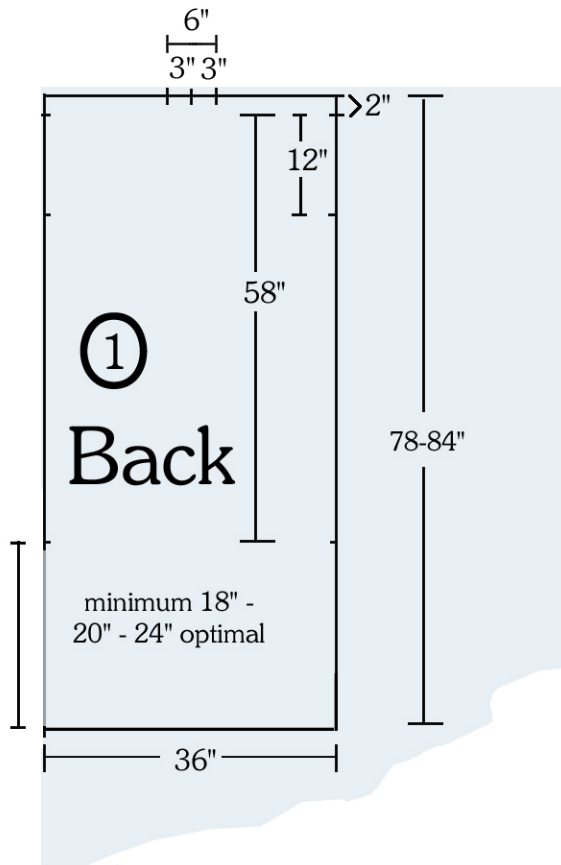
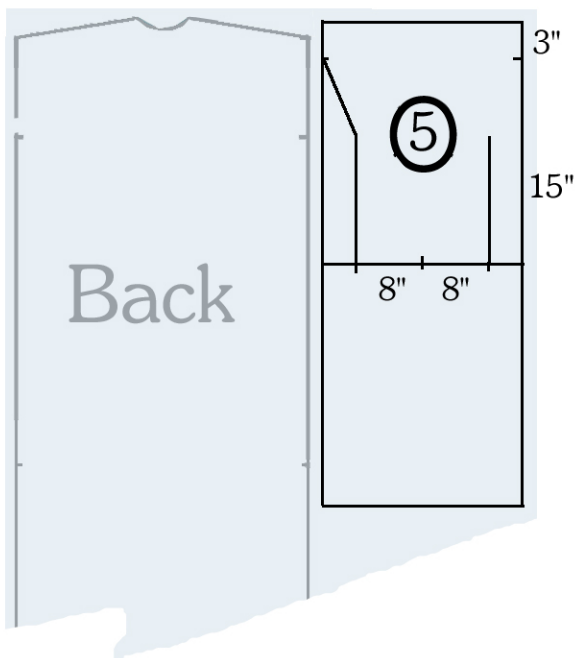
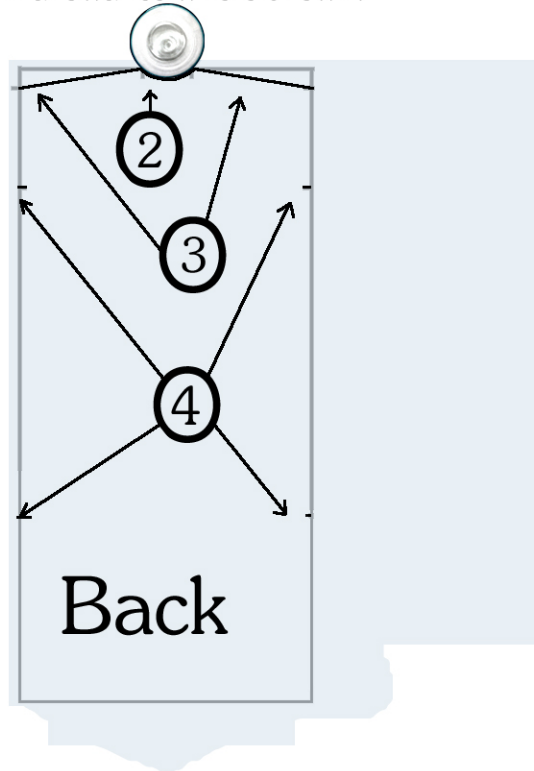


Coat Drafting Instructions

Permission is given to duplicate this pattern and instructions as long as the attribution to Kimball & Phillips, LLC., is kept, and as long as no profit is made selling the patterns or coats.



1. Mark these dimensions on your yardage (60" shown). Alternate layouts (tarps) are shown at end of these instructions.
2. Find a plate, bowl or pan lid 8-9" in diameter. Place it as shown at the 6" marks top center, and trace its bottom edge.
3. Draw lines from the center arc to the side seam marks 2" down.
4. Make short clips (1/4") into the seam allowance where shown.

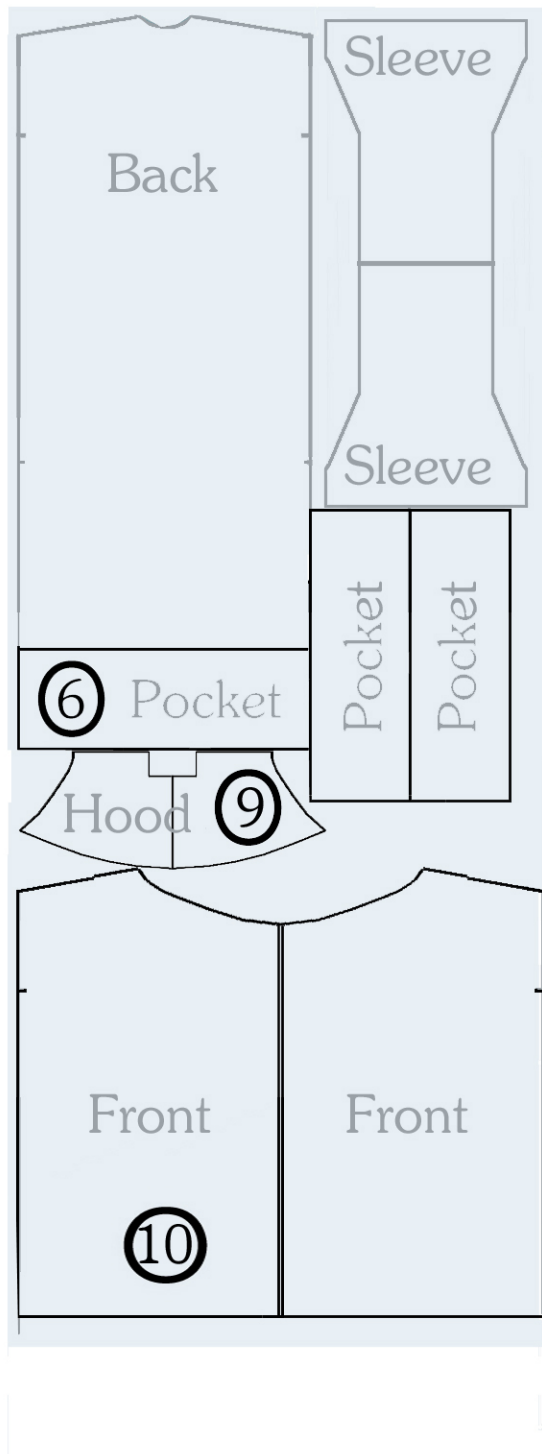


5. Sleeves: mark two rectangles 24" x 29". Mark 3" down from the top on each side. Mark the center and 8" to each side on the bottom. Extend those lines up 15". Connect to finish upper sleeve (one side shown)

Duplicate on the other rectangle.

Coat Drafting Instructions

Permission is given to duplicate this pattern and instructions as long as the attribution to Kimball & Phillips, LLC., is kept, and as long as no profit is made selling the patterns or coats.

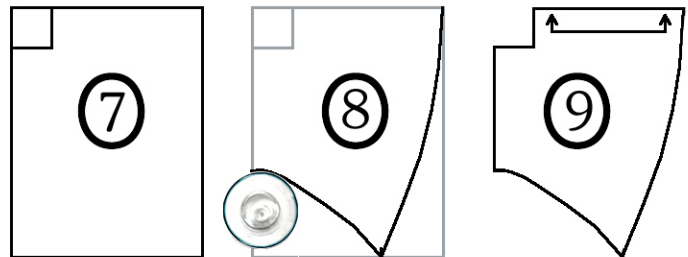


6. Pockets

Mark three strips 12" high and 36" wide.

7. Hood

Mark a rectangle 14" x 18" on a large piece of paper. Mark a square 2 1/2" x 2 1/2".



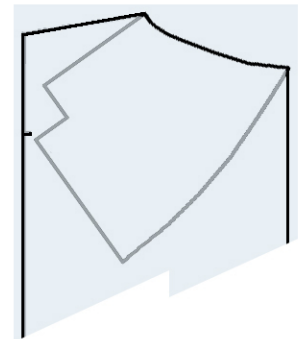
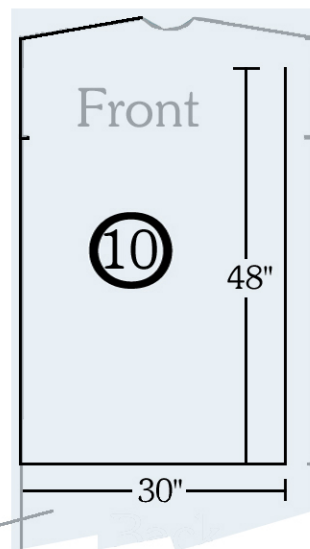
8. Measure up 6" from bottom left corner and also 10" across bottom. Trace the plate you used for the back and curve the line down to the mark as shown. Connect with a curved line to the top right corner.

OR print out the PDF of four pages of the hood pattern.

9. Lay the hood out as shown.

10. The two fronts are taken from the back draft.

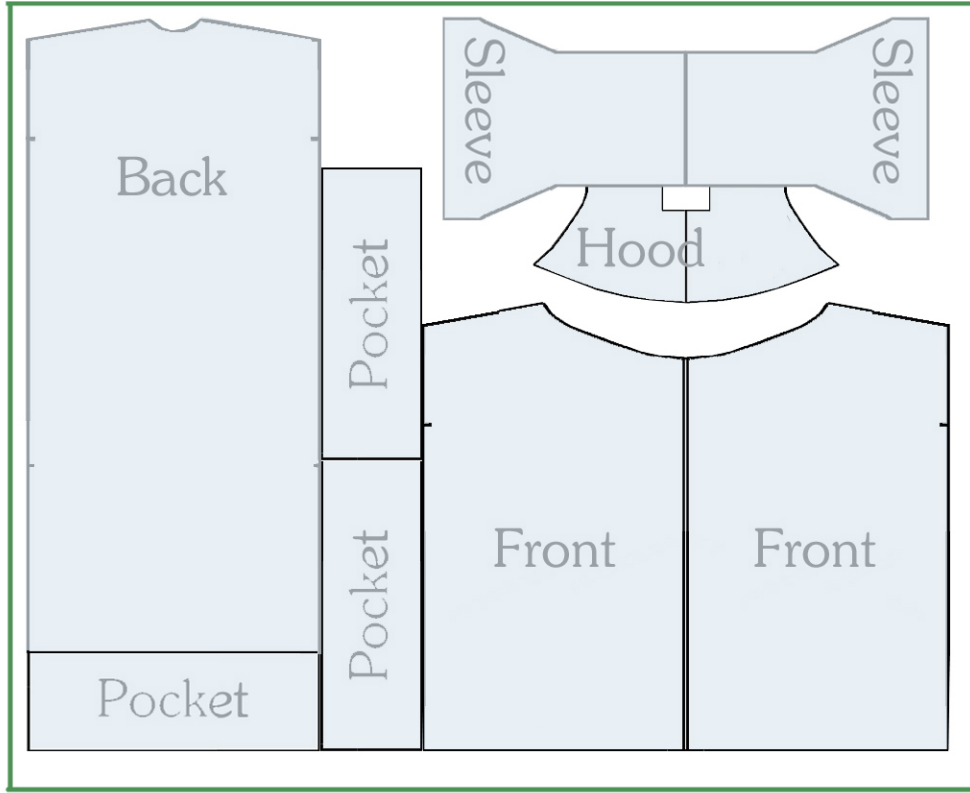
Trace the shoulder line, the side seam to the lower mark, draw across the bottom for 30", and then vertically for 48". Use the lower edge of the hood for the last bit. Reverse the pattern for the second front piece.



(When sewn, the hood's back seam is at the CB of the fabric, and does NOT extend completely to the front edge - this is simplified pattern work. If you want to draft more professionally, be our guest.)

Coat Drafting Instructions

Permission is given to duplicate this pattern and instructions as long as the attribution to Kimball & Phillips, LLC., is kept, and as long as no profit is made selling the patterns or coats.



Layout for 8' x 10' (usable) tarp, fleece throw, or felted (non-raveling) blanket.
Use the dimensions given earlier.

Pieces' straight edges should be butted together so you only cut that line once.